

# GENERAL BUILDING EVACUATION PLAN

For your safety, **YOU MUST EVACUATE** when a building evacuation is initiated.

## The "Dos and Don'ts" of Evacuation:

- Remain calm as you exit quickly and in an orderly manner.
- Listen and follow the instructions of the Emergency Response Team.
- If you are leaving a closed room, close the door behind you.
- Take only essential personal items with you. **DO NOT** return for coats, purses, backpacks, etc.
- Once out of the building, proceed to the designated assembly area (Parking Lot on Brown Street, located on the right side of the church). Pick your children up there.
- Do not return to the building until the "ALL CLEAR" signal is given.

## NUMBERS TO REMEMBER

**EMERGENCY** - Call 911

### NON - EMERGENCY NUMBERS:

**ELECTRIC COMPANY:** CITY OF COVINGTON 770-385-2000

**GAS:** CITY OF COVINGTON 770-385-2000

**WATER:** CITY OF COVINGTON 770-385-2000

### AREA HOSPITALS:

Piedmont Newton / 770-786-7053

Piedmont Rockdale / 770-918-3000

## FPC CONTACT INFO

1169 Clark Street  
Covington, GA 30014

(770) 786-7321  
[www.fpccov.org](http://www.fpccov.org)

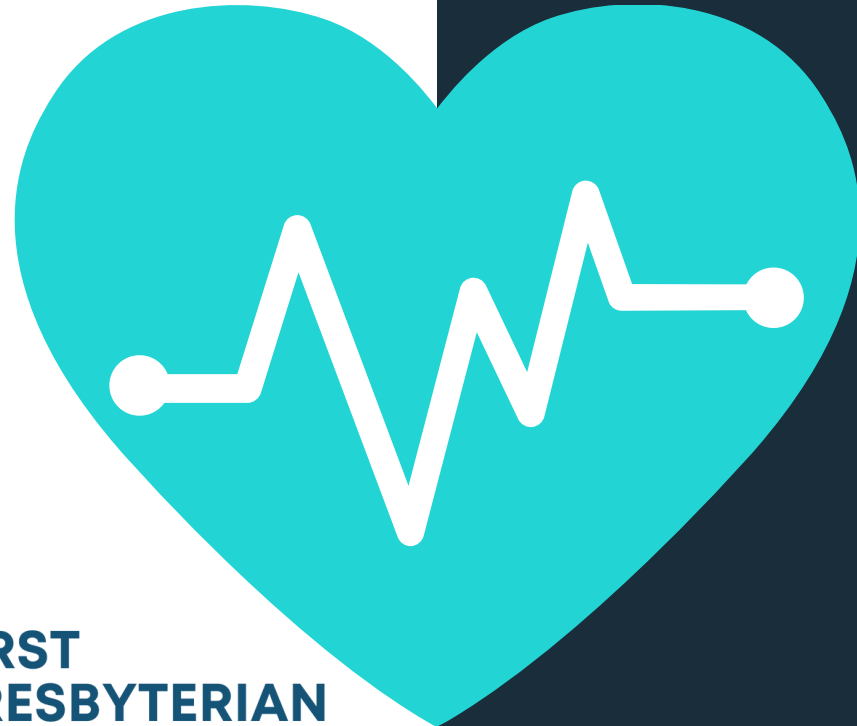
Pastor Rev. Neeley Rentz Lane  
Emergency Leader - Ed Perkerson  
Facilities Leader - Stan Hall  
Nursery Leader - Danielle Schubert



**FIRST  
PRESBYTERIAN  
CHURCH**  
COVINGTON, GA

# EMERGENCY ACTION PLAN

For the purpose of this plan, an emergency is defined as any situation that poses immediate risk to the safety, health, life, property, and/or environment and is within the ability of local persons and/or agencies to treat.



Our commitment to communal care requires acknowledging the possibility for emergencies to occur and being prepared to manage them to the best of our ability.